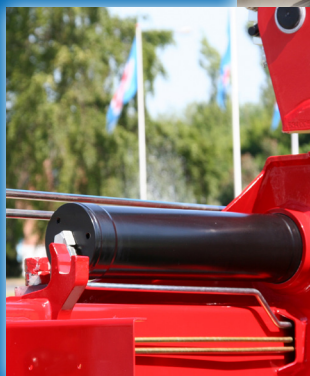


# 2420K-RC



- power to lift

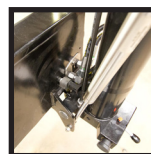


LOADING GROUP HC1/HD4/B3		2420-K2	2420-K3	2420-K4	2420-K5	2420-K6
Type				K-RC		
<b>TECHNICAL DATA</b>						
Load moment	tm	22.9	22.4	21.8	21.4	20.9
Hydraulic reach	m	8.3	10.3	12.5	14.8	17.2
Slewing torque	kgm	2762				
Slewing angle	°	400				
Working pressure	bar	330				
Weight excl. stabilizer legs	kg	1980	2150	2350	2500	2640
Weight of stabilizer legs, standard	kg	290				
Pump performance	l/min	60-70				
Oil tank capacity, separate tank	l	90				
Power consumption	kW	33-38				
<b>GEOMETRY</b>						
Height above mounting surface	mm	2295				
Width, folded	mm	2500				
Length of crane, no extra valves	mm	885	885	885	885	885
Length with 2 extra valves in internal hose reel	m	885	885	885	885	885
Dual Power Plus link arm system		Basic				
Over-bending on crane	°	15				
Hook height 1 m from column	m	2.7	2.7	2.6	2.5	2.4
<b>CONTROL MODE</b>						
Radio remote control of crane		Basic				
Manual operation of stabilizer functions		Basic				
Remote control box with HMF InfoCentre		Option				
Remote control box, linear control levers (L) or joysticks (J)		L / J				
Stand-up controls with bracket for radio remote control box		Option				
Top seat on column with bracket for remote control box		Option				
<b>CONTROLS</b>						
RCL 5300 Safety System		Basic				
Control valve type (RC) for crane operation		Basic				
Control valve type (-h) for operation of stabilizer legs and beams		Basic				
HDL speed adaptation system		Basic				
<b>OPTIONS: HYDRAULIC EQUIPMENT</b>						
Oil cooler		Option				
High-pressure filter		Option				
Hydraulically extensible stabilizer beam		Option				
Multi-coupling for extra valves in hose guides		Option				
Extra valves in hose guides		Option				
Extra valves in hose reels internally in the jib extensions		Option				
2 or 4 available functions for operating the separate traverse		Option				
1500 kg or 2500 kg hydraulic hoist on the crane		Option				
74 l oil tank mounted on the crane		Option				
<b>OTHER EQUIPMENT</b>		2420-K2	2420-K3	2420-K4	2420-K5	2420-K6
Number of manual extensions		-	-	3	3	3
Fixed or variable flow pump		Option				
Work light on crane		Option				
Stabilizer leg, 30°/60° manual swing-up, type R, 0.8-1.3 m		Option				
Manual swing-up stabilizer leg with gas spring		Option				
Biodegradable oil		Option				
Footplate extended 100 mm or 200 mm		Option				



### Corrosion and Wear and Tear

All painted surfaces are coated with EQC surface treatment, and all hydraulic pipes are finished with Zistaplex coating.



### 180° Swing-Up Stabilizer Leg

Swing-up stabilizer leg to 180° with or without radio remote control.



### HMF InfoCentre

The HMF InfoCentre continuously informs the operator about the current load moment and condition of the crane.



### Dual Link Arm System

The HMF dual Power Plus link arm system has an excellent lifting capacity at long reach and in high positions as well as it makes it possible to lift a heavy load close to the column.





Immaculate Finish - Year after Year

HMF does not compromise on the surface treatment. This is made possible thanks to HMF's ZetaCoat pre-treatment followed by EQC powder coating, ensuring that corrosion never takes over. We guarantee that you obtain the best imaginable paint quality - a quality that never fades and that can withstand damage.



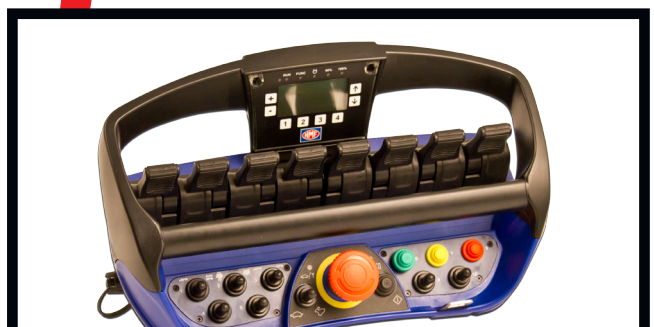
Tested to the Limit

An HMF crane is never released until it has been tested again and again. All crane series are put on the test bench, where the crane is loaded up to at least 125 % of its nominal capacity in all positions. Not just once, but 145,000 times! The crane is also exposed to a dynamic test in which the durability of all components is tested.



EVS - active Securing of Stability

HMF's patent pending stability safety system, EVS, is continuously taking into account the current load on the vehicle so that crane and truck are in perfect balance. As the system includes the load on the truck body as a part of the tare weight of the vehicle, it means that you actually obtain a considerably larger working area with a load on the truck body - thanks to EVS.



HMF Radio Remote Control type RC

(Remote Control)

HMF radio remote control provides the operator with all advantages and possibilities for remote control of the crane functions and important safety functions. The crane operator can move in the entire working area and can at any time position himself optimally and safely in relation to the lifting task. The crane is equipped with the HDL system which automatically adapts the crane speed to the working situation when it is exposed to a lot of stress.



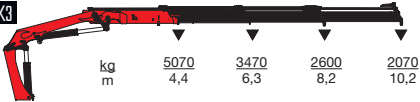
- power to lift

### HMF 2420K-RC

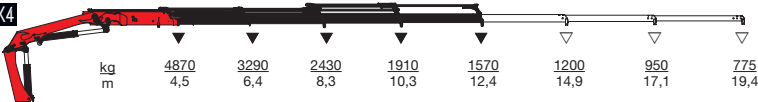
#### HMF 2420-K2



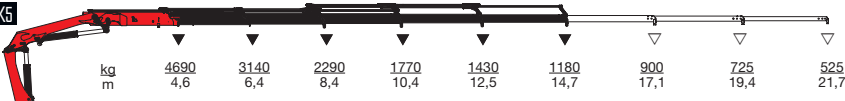
#### HMF 2420-K3



#### HMF 2420-K4



#### HMF 2420-K5



#### HMF 2420-K6



▼ Lifting capacity without manual extensions  
 ▽ Lifting capacity with manual extensions



- power to lift  
**HMF Group A/S**

Oddervej 200 · DK-8270 Højbjerg  
 Tel.: +45 8627 0800 · Fax: +45 8627 0744 · info@hmf.dk

[www.hmf.dk](http://www.hmf.dk)

Z008900-01

We reserve the right to introduce improvements and modifications